



TELEHEALTH SERVICES



Target Audience: Medicare Fee-For-Service Providers

The Hyperlink Table, at the end of this document, provides the complete URL for each hyperlink.

CPT codes, descriptions and other data only are copyright 2018 American Medical Association. All Rights Reserved. Applicable FARS/HHSAR apply. CPT is a registered trademark of the American Medical Association. Applicable FARS/HHSAR Restrictions Apply to Government Use. Fee schedules, relative value units, conversion factors and/or related components are not assigned by the AMA, are not part of CPT, and the AMA is not recommending their use. The AMA does not directly or indirectly practice medicine or dispense medical services. The AMA assumes no liability for data contained or not contained herein.

TABLE OF CONTENTS

Originating Sites.....	4
Distant Site Practitioners.....	6
Telehealth Services	7
Telehealth Services Billing and Payment.....	11
Telehealth Originating Sites Billing and Payment.....	11
Resources	12
Helpful Websites.....	13
Regional Office Rural Health Coordinators	13



CMS Alert!**Medicare Beneficiaries Expanded Telehealth Benefits During COVID-19 Outbreak**

Under the Coronavirus Preparedness and Response Supplemental Appropriations Act and Section 1135 waiver authority, the Centers for Medicare & Medicaid Services (CMS) broadened access to Medicare telehealth services, so beneficiaries can get a wider range of services from their doctors and other clinicians without traveling to a health care facility. On March 6, 2020, Medicare began temporarily paying clinicians to furnish beneficiary telehealth services residing across the entire country.

Before this announcement, Medicare could only pay clinicians for telehealth services, such as routine visits in certain circumstances. For example, the beneficiary getting the services must live in a rural area and travel to a local medical facility to get telehealth services from a doctor in a remote location. In addition, the beneficiary generally could not get telehealth services in their home.

Under this Section 1135 waiver expansion, a range of providers, such as doctors, nurse practitioners, clinical psychologists, and licensed clinical social workers, can offer a specific set of telehealth services. The specific set of services beneficiaries can get include evaluation and management visits (common office visits), mental health counseling, and preventive health screenings. Beneficiaries can get telehealth services in any health care facility including a physician's office, hospital, nursing home or rural health clinic, as well as from their homes. This change broadens telehealth flexibility without regard to the beneficiary's diagnosis, because at this critical point it is important to ensure beneficiaries follow CDC guidance including practicing social distancing to reduce the risk of COVID-19 transmission. This change will help prevent vulnerable beneficiaries from unnecessarily entering a health care facility when clinicians can meet their needs remotely.

To read the Fact Sheet on this announcement visit: <https://www.cms.gov/newsroom/fact-sheets/medicare-telemedicine-health-care-provider-fact-sheet>

To read the Frequently Asked Questions on this announcement visit: <https://www.cms.gov/files/document/medicare-telehealth-frequently-asked-questions-faqs-31720.pdf>

Learn about these Medicare telehealth services topics:

- Originating sites
- Distant site practitioners
- Telehealth services
- Telehealth services billing and payment
- Telehealth originating sites billing and payment
- Resources
- Helpful websites and Regional Office Rural Health Coordinators

Medicare pays for specific (Part B) physician or practitioner services furnished through a telecommunications system. Telehealth services substitute for an in-person encounter.

ORIGINATING SITES

An originating site is the location where a Medicare beneficiary gets physician or practitioner medical services through a telecommunications system. The beneficiary must go to the originating site for the services located in either:

- A county outside a Metropolitan Statistical Area (MSA)
- A rural [Health Professional Shortage Area \(HPSA\)](#) in a rural census tract

The Health Resources and Services Administration (HRSA) decides HPSAs, and the Census Bureau decides MSAs. To see a potential Medicare telehealth originating site's payment eligibility, go to HRSA's [Medicare Telehealth Payment Eligibility Analyzer](#).

Providers qualify as originating sites, regardless of location, if they were participating in a Federal telemedicine demonstration project approved by (or getting funding from) the U.S. Department of Health & Human Services as of December 31, 2000.

Beginning July 1, 2019, the [Substance Use-Disorder Prevention that Promotes Opioid Recovery and Treatment \(SUPPORT\) for Patients and Communities Act](#) removes the originating site geographic conditions and adds an individual's home as a permissible originating telehealth services site for treatment of a substance use disorder or a co-occurring mental health disorder.

Each December 31 of the prior calendar year (CY), an originating site's geographic eligibility is based on the area's status. This eligibility continues for a full CY. Authorized originating sites include:

- Physician and practitioner offices
- Hospitals
- Critical Access Hospitals (CAHs)
- Rural Health Clinics
- Federally Qualified Health Centers
- Hospital-based or CAH-based Renal Dialysis Centers (including satellites)
- Skilled Nursing Facilities (SNFs)
- Community Mental Health Centers (CMHCs)
- Renal Dialysis Facilities
- Homes of beneficiaries with End-Stage Renal Disease (ESRD) getting home dialysis
- Mobile Stroke Units

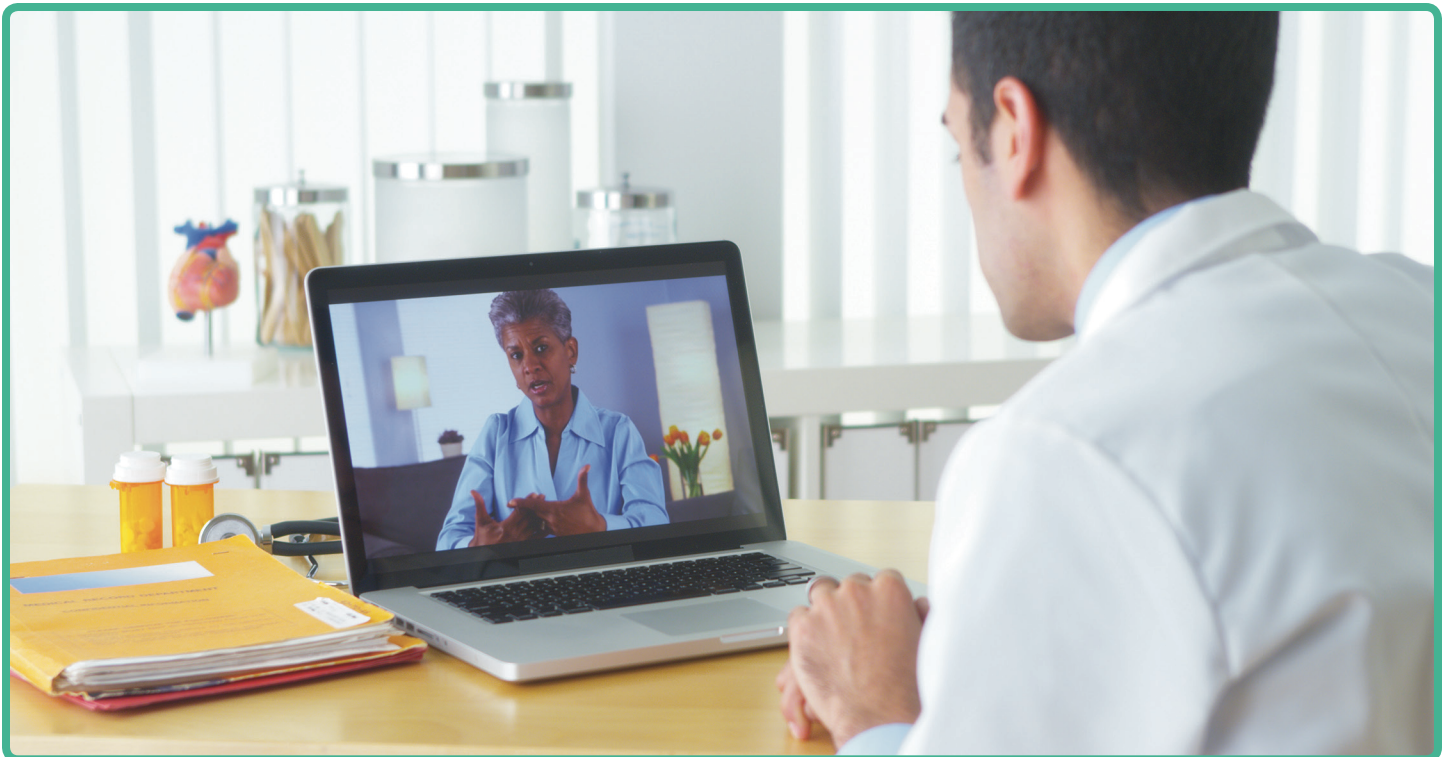
Note: Medicare does not apply originating site geographic conditions to hospital-based and CAH-based renal dialysis centers, renal dialysis facilities, and beneficiary homes when practitioners furnish monthly home dialysis ESRD-related medical evaluations. Independent Renal Dialysis Facilities are not eligible originating sites.

Beginning January 1, 2019, the Bipartisan Budget Act of 2018 removed the originating site geographic conditions and added eligible originating sites to diagnose, evaluate, or treat symptoms of an acute stroke. Go to MLN Matters® article, [New Modifier for Expanding the Use of Telehealth for Individuals with Stroke](#) to learn how to use the new modifier for billing.

DISTANT SITE PRACTITIONERS

Distant site practitioners who can furnish and get payment for covered telehealth services (subject to State law) are:

- Physicians
- Nurse practitioners (NPs)
- Physician assistants (PAs)
- Nurse-midwives
- Clinical nurse specialists (CNSs)
- Certified registered nurse anesthetists
- Clinical psychologists (CPs) and clinical social workers (CSWs)
 - CPs and CSWs cannot bill Medicare for psychiatric diagnostic interview examinations with medical services or medical evaluation and management services. They cannot bill or get paid for Current Procedural Terminology (CPT) codes 90792, 90833, 90836, and 90838.
- Registered dietitians or nutrition professional



CPT only copyright 2018 American Medical Association. All rights reserved.

TELEHEALTH SERVICES

You must use an interactive audio and video telecommunications system that permits real-time communication between you at the distant site, and the beneficiary at the originating site.

Transmitting medical information to a physician or practitioner who reviews it later is permitted only in Alaska or Hawaii Federal telemedicine demonstration programs.

CY 2019 Medicare Telehealth Services

Service	HCPCS/CPT Code
Telehealth consultations, emergency department or initial inpatient	G0425–G0427
Follow-up inpatient telehealth consultations furnished to beneficiaries in hospitals or SNFs	G0406–G0408
Office or other outpatient visits	99201–99215
Subsequent hospital care services, with the limitation of 1 telehealth visit every 3 days	99231–99233
Subsequent nursing facility care services, with the limitation of 1 telehealth visit every 30 days	99307–99310
Individual and group kidney disease education services	G0420–G0421
Individual and group diabetes self-management training services, with a minimum of 1 hour of in-person instruction furnished in the initial year training period to ensure effective injection training	G0108–G0109
Individual and group health and behavior assessment and intervention	96150–96154
Individual psychotherapy	90832–90838
Telehealth Pharmacologic Management	G0459
Psychiatric diagnostic interview examination	90791–90792
End-Stage Renal Disease (ESRD)-related services included in the monthly capitation payment	90951, 90952, 90954, 90955, 90957, 90958, 90960, 90961
End-Stage Renal Disease (ESRD)-related services for home dialysis per full month, for patients younger than 2 years of age to include monitoring for the adequacy of nutrition, assessment of growth and development, and counseling of parents	90963

CPT only copyright 2018 American Medical Association. All rights reserved.

CY 2019 Medicare Telehealth Services (cont.)

Service	HCPCS/CPT Code
End-Stage Renal Disease (ESRD)-related services for home dialysis per full month, for patients 2–11 years of age to include monitoring for the adequacy of nutrition, assessment of growth and development, and counseling of parents	90964
End-Stage Renal Disease (ESRD)-related services for home dialysis per full month, for patients 12–19 years of age to include monitoring for the adequacy of nutrition, assessment of growth and development, and counseling of parents	90965
End-Stage Renal Disease (ESRD)-related services for home dialysis per full month, for patients 20 years of age and older	90966
End-Stage Renal Disease (ESRD)-related services for dialysis less than a full month of service, per day; for patients younger than 2 years of age	90967
End-Stage Renal Disease (ESRD)-related services for dialysis less than a full month of service, per day; for patients 2–11 years of age	90968
End-Stage Renal Disease (ESRD)-related services for dialysis less than a full month of service, per day; for patients 12–19 years of age	90969
End-Stage Renal Disease (ESRD)-related services for dialysis less than a full month of service, per day; for patients 20 years of age and older	90970
Individual and group medical nutrition therapy	G0270, 97802–97804
Neurobehavioral status examination	96116
Smoking cessation services	G0436, G0437, 99406, 99407
Alcohol and/or substance (other than tobacco) abuse structured assessment and intervention services	G0396, G0397
Annual alcohol misuse screening, 15 minutes	G0442
Brief face-to-face behavioral counseling for alcohol misuse, 15 minutes	G0443
Annual depression screening, 15 minutes	G0444

CPT only copyright 2018 American Medical Association. All rights reserved.

CY 2019 Medicare Telehealth Services (cont.)

Service	HCPCS/CPT Code
High-intensity behavioral counseling to prevent sexually transmitted infection; face-to-face, individual, includes: education, skills training and guidance on how to change sexual behavior; performed semi-annually, 30 minutes	G0445
Annual, face-to-face intensive behavioral therapy for cardiovascular disease, individual, 15 minutes	G0446
Face-to-face behavioral counseling for obesity, 15 minutes	G0447
Transitional care management services with moderate medical decision complexity (face-to-face visit within 14 days of discharge)	99495
Transitional care management services with high medical decision complexity (face-to-face visit within 7 days of discharge)	99496
Advance Care Planning, 30 minutes	99497
Advance Care Planning, additional 30 minutes	99498
Psychoanalysis	90845
Family psychotherapy (without the patient present)	90846
Family psychotherapy (conjoint psychotherapy) (with patient present)	90847
Prolonged service in the office or other outpatient setting requiring direct patient contact beyond the usual service; first hour	99354
Prolonged service in the office or other outpatient setting requiring direct patient contact beyond the usual service; each additional 30 minutes	99355
Prolonged service in the inpatient or observation setting requiring unit/floor time beyond the usual service; first hour (list separately in addition to code for inpatient evaluation and management service)	99356
Prolonged service in the inpatient or observation setting requiring unit/floor time beyond the usual service; each additional 30 minutes (list separately in addition to code for prolonged service)	99357
Annual Wellness Visit, includes a personalized prevention plan of service (PPPS) first visit	G0438

CPT only copyright 2018 American Medical Association. All rights reserved.

CY 2019 Medicare Telehealth Services (cont.)

Service	HCPCS/CPT Code
Annual Wellness Visit, includes a personalized prevention plan of service (PPPS) subsequent visit	G0439
Telehealth Consultation, Critical Care, initial, physicians typically spend 60 minutes communicating with the patient and providers via telehealth	G0508
Telehealth Consultation, Critical Care, subsequent, physicians typically spend 50 minutes communicating with the patient and providers via telehealth	G0509
Counseling visit to discuss need for lung cancer screening using low dose CT scan (LDCT) (service is for eligibility determination and shared decision making)	G0296
Interactive Complexity Psychiatry Services and Procedures	90785
Health Risk Assessment	96160, 96161
Comprehensive assessment of and care planning for patients requiring chronic care management	G0506
Psychotherapy for crisis	90839, 90840
Prolonged preventive services	G0513, G0514

A physician, NP, PA, or CNS must furnish at least one ESRD-related “hands on visit” (not telehealth) each month to examine the beneficiary’s vascular access site.

CPT only copyright 2018 American Medical Association. All rights reserved.

TELEHEALTH SERVICES BILLING AND PAYMENT

Submit professional telehealth service claims using the appropriate CPT or HCPCS code.

If you performed telehealth services “through an asynchronous telecommunications system”, add the telehealth GQ modifier with the professional service CPT or HCPCS code (for example, 99201 GQ). You are certifying the asynchronous medical file was collected and transmitted to you at the distant site from a Federal telemedicine demonstration project conducted in Alaska or Hawaii.

Submit telehealth services claims, using Place of Service (POS) 02-Telehealth, to indicate you furnished the billed service as a professional telehealth service from a distant site. As of January 1, 2018, distant site practitioners billing telehealth services under the CAH Optional Payment Method II must submit institutional claims using the GT modifier.

Bill covered telehealth services to your Medicare Administrative Contractor (MAC). They pay you the appropriate telehealth services amount under the Medicare Physician Fee Schedule (PFS). If you are located in, and you reassigned your billing rights to, a CAH and elected the Optional Payment Method II for outpatients, the CAH bills the telehealth services to the MAC. The payment is 80 percent of the Medicare PFS facility amount for the distant site service.

TELEHEALTH ORIGINATING SITES BILLING AND PAYMENT

HCPCS Code Q3014 describes the Medicare telehealth originating sites facility fee. Bill your MAC for the separately billable Part B originating site facility fee.

Note: The originating site facility fee does not count toward the number of services used to determine payment for partial hospitalization services when a CMHC serves as an originating site.



CPT only copyright 2018 American Medical Association. All rights reserved.

RESOURCES

Telehealth Services Resources

For More Information About...	Resource
Telehealth Services	CMS.gov/Medicare/Medicare-General-Information/Telehealth/Telehealth-Codes.html CMS.gov/Medicare/Medicare-General-Information/Telehealth CMS.gov/Regulations-and-Guidance/Guidance/Manuals/Downloads/clm104c12.pdf
Physician Bonuses	CMS.gov/Medicare/Medicare-Fee-for-Service-Payment/HPSAPSAPhysicianBonuses CMS.gov/Outreach-and-Education/Medicare-Learning-Network-MLN/MLNProducts/MLN-Publications-Items/CMS1246598.html

Hyperlink Table

Embedded Hyperlink	Complete URL
Health Professional Shortage Area	https://www.cms.gov/Medicare/Medicare-Fee-for-Service-Payment/HPSAPSAPhysicianBonuses
Medicare Telehealth Payment Eligibility Analyzer	https://data.hrsa.gov/tools/medicare/telehealth
New Modifier for Expanding the Use of Telehealth for Individuals with Stroke	https://www.cms.gov/Outreach-and-Education/Medicare-Learning-Network-MLN/MLNMattersArticles/Downloads/MM10883.pdf
Substance Use-Disorder Prevention that Promotes Opioid Recovery and Treatment (SUPPORT) for Patients and Communities Act	https://www.congress.gov/bill/115th-congress/house-bill/6

HELPFUL WEBSITES

American Hospital Association Rural Health Care

<https://www.aha.org/advocacy/small-or-rural>

Critical Access Hospitals Center

<https://www.cms.gov/Center/Provider-Type/Critical-Access-Hospitals-Center.html>

Disproportionate Share Hospitals

<https://www.cms.gov/Medicare/Medicare-Fee-for-Service-Payment/AcuteInpatientPPS/dsh.html>

Federally Qualified Health Centers Center

<https://www.cms.gov/Center/Provider-Type/Federally-Qualified-Health-Centers-FQHC-Center.html>

Health Resources and Services Administration

<https://www.hrsa.gov>

Hospital Center

<https://www.cms.gov/Center/Provider-Type/Hospital-Center.html>

Medicare Learning Network®

<http://go.cms.gov/MLNGenInfo>

National Association of Community Health Centers

<http://www.nachc.org>

National Association of Rural Health Clinics

<https://narhc.org>

National Rural Health Association

<https://www.ruralhealthweb.org>

Rural Health Clinics Center

<https://www.cms.gov/Center/Provider-Type/Rural-Health-Clinics-Center.html>

Rural Health Information Hub

<https://www.ruralhealthinfo.org>

Swing Bed Providers

<https://www.cms.gov/Medicare/Medicare-Fee-for-Service-Payment/SNFPPS/SwingBed.html>

Telehealth

<https://www.cms.gov/Medicare/Medicare-General-Information/Telehealth>

Telehealth Resource Centers

<https://www.telehealthresourcecenter.org>

U.S. Census Bureau

<https://www.census.gov>

REGIONAL OFFICE RURAL HEALTH COORDINATORS

To find contact information for CMS Regional Office Rural Health Coordinators who provide technical, policy, and operational assistance on rural health issues, refer to [CMS.gov/Outreach-and-Education/Outreach/OpenDoorForums/Downloads/CMSRuralHealthCoordinators.pdf](https://www.cms.gov/Outreach-and-Education/Outreach/OpenDoorForums/Downloads/CMSRuralHealthCoordinators.pdf).

[Medicare Learning Network® Product Disclaimer](#)

The Medicare Learning Network®, MLN Connects®, and MLN Matters® are registered trademarks of the U.S. Department of Health & Human Services (HHS).